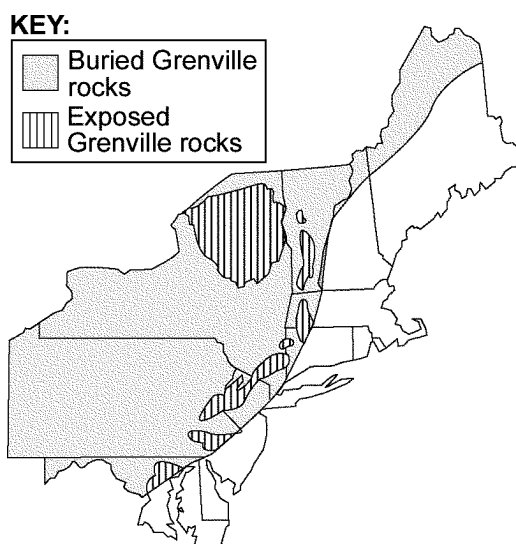


Name: _____

LANDSCAPES - REGENTS REVIEW

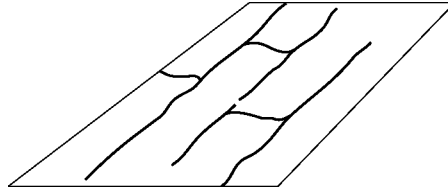
- 1) New York State's generalized landscape regions are identified primarily on the basis of elevation and
 - A) geologic age
 - B) climate zones
 - C) latitude
 - D) bedrock structure
- 2) New York State landscape regions are identified and classified primarily by their
 - A) surface topography and bedrock structure
 - B) existing vegetation and type of weather
 - C) chemical weathering rate and nearness to large bodies of water
 - D) latitude and longitude
- 3) The generalized landscape regions of New York State are classified according to
 - A) climate and topography
 - B) bedrock structure and elevation
 - C) bedrock type and index fossils
 - D) latitude and longitude
- 4) What elevation and bedrock structure are generally found in the Catskills?
 - A) high elevation and horizontal sedimentary bedrock structure
 - B) low elevation and horizontal sedimentary bedrock structure
 - C) high elevation and folded metamorphic bedrock structure
 - D) low elevation and folded metamorphic bedrock structure
- 5) Which two types of rock are most commonly found as outcrops in New York State's Newark Lowlands landscape region?
 - A) rock salt and gypsum
 - B) gneiss and quartzite
 - C) conglomerate and sandstone
 - D) limestone and granite
- 6) The Catskills landscape region is classified as a plateau primarily because the region has
 - A) jagged hilltops
 - B) folded metamorphic rock
 - C) V-shaped valleys
 - D) horizontal bedrock structure
- 7) Which two landscape regions in New York State have the *oldest* surface bedrock?
 - A) Taconic Mountains and the Catskills
 - B) Adirondack Mountains and Hudson Highlands
 - C) Allegheny Plateau and Newark Lowlands
 - D) Tug Hill Plateau and Erie-Ontario Lowlands
- 8) During which two geologic time periods did *most* of the surface bedrock of the Taconic Mountains form?
 - A) Cambrian and Ordovician
 - B) Pennsylvanian and Mississippian
 - C) Silurian and Devonian
 - D) Triassic and Jurassic
- 9) The map below shows the location of Grenville-age bedrock found in the northeastern United States.



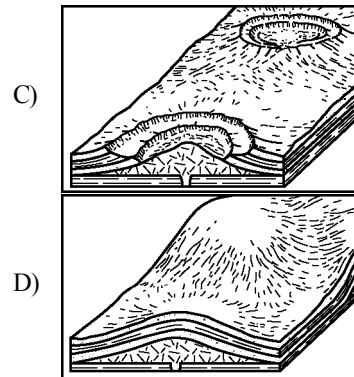
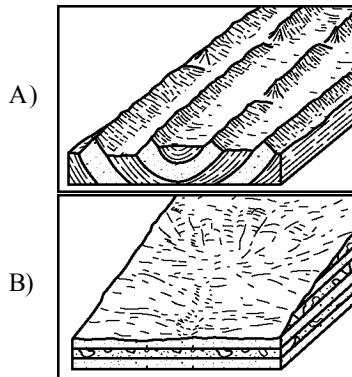
In which New York State landscapes is Grenville-age bedrock exposed at Earth's surface?

- A) Catskills and Allegheny Plateau
- B) Tug Hill Plateau and Atlantic Coastal Plain
- C) Hudson Highlands and Adirondack Mountains
- D) Erie-Ontario Lowlands and St. Lawrence Lowlands

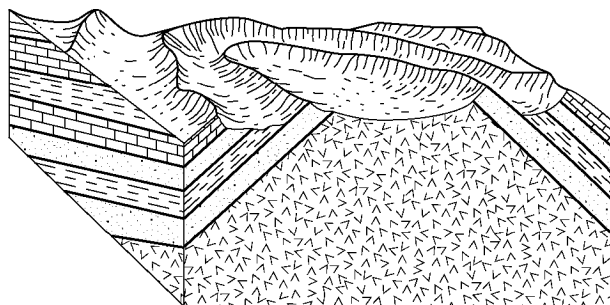
- 17) Landscapes with horizontal bedrock structure, steep slopes, and high elevations are classified as
 A) plain regions B) lowland regions C) plateau regions D) mountain regions
- 18) Buffalo, New York, and Plattsburgh, New York, are *both* located in landscape regions called
 A) lowlands B) mountains C) plateaus D) highlands
- 19) Which two locations are in the same New York State landscape region?
 A) Albany and Old Forge C) Jamestown and Ithaca
 B) Binghamton and New York City D) Massena and Mt. Marcy
- 20) In which New York State landscape region is Niagara Falls located?
 A) Allegheny Plateau C) Tug Hill Plateau
 B) St. Lawrence Lowlands D) Erie-Ontario Lowlands
- 21) The diagram below represents a map view of a stream drainage pattern.



Which underlying bedrock structure most likely produced this stream drainage pattern?



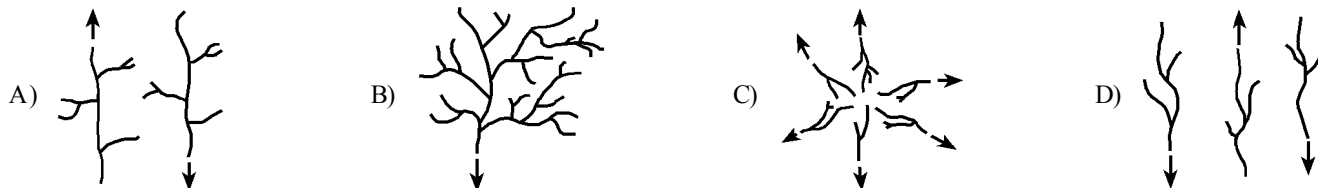
- 22) The block diagram below represents a deeply eroded dome.



Which of the following maps shows the stream drainage pattern that would most likely develop on this deeply eroded dome?



- 23) Which stream-drainage pattern most likely developed on the surface of a newly formed volcanic mountain?



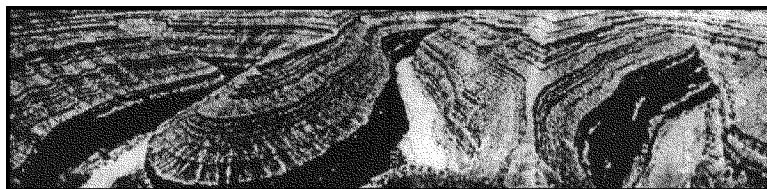
- 24) Which New York State river flows generally southward?
 A) Hudson River B) Niagara River C) St. Lawrence River D) Genesee River
- 25) Which *two* New York State landscape regions are formed mostly of surface bedrock that is approximately the same geologic age?
 A) Tug Hill Plateau and St. Lawrence Lowlands C) Erie-Ontario Lowlands and Adirondack Mountains
 B) Manhattan Prong and Atlantic Coastal Plain D) Adirondack Mountains and Allegheny Plateau
- 26) In which New York State landscape region is most of the surface bedrock composed of metamorphic rock?
 A) Newark Lowlands C) Erie-Ontario Lowlands
 B) Adirondacks D) Catskills
- 27) In what New York State landscape region is surface bedrock generally composed of metamorphic rock?
 A) Adirondack Mountains C) Newark Lowlands
 B) the Catskills D) Tug Hill Plateau
- 28) Large garnet mineral crystals are found in the metamorphic surface bedrock in which New York State landscape region?
 A) Tug Hill Plateau C) Adirondacks
 B) Catskills D) Erie-Ontario Lowlands
- 29) The shore of which New York State body of water has large amounts of metamorphic bedrock exposed at the surface?
 A) southern shore of Long Island Sound C) southern shore of Lake Ontario
 B) eastern shore of Lake Erie D) western shore of Lake Champlain
- 30) What is the age of the most abundant surface bedrock in the Finger Lakes region of New York State?
 A) Permian B) Pennsylvanian C) Cambrian D) Devonian

- 31) The table below describes the characteristics of three landscape regions, *A*, *B*, and *C*, found in the United States.

Landscape	Bedrock	Elevation/Slopes	Streams
<i>A</i>	Faulted and folded gneiss and schist	High elevation Steep slopes	High velocity Rapids
<i>B</i>	Layers of sandstone and shale	Low elevation Gentle slopes	Low velocity Meanders
<i>C</i>	Thick horizontal layers of basalt	Medium elevation Steep to gentle slopes	High to low velocity Rapids and meanders

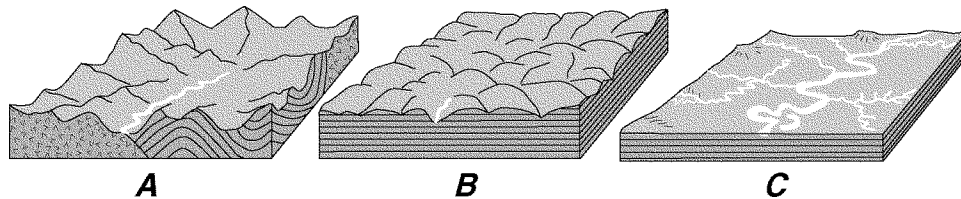
Which list *best* identifies landscapes *A*, *B*, and *C*?

- A) *A* — plain, *B* — mountain, *C* — plateau
 B) *A* — mountain, *B* — plain, *C* — plateau
 C) *A* — plain, *B* — plateau, *C* — mountain
 D) *A* — plateau, *B* — mountain, *C* — plain
- 32) The photograph below shows an eroded plateau found in the southwestern United States.



Which processes most likely developed this landscape?

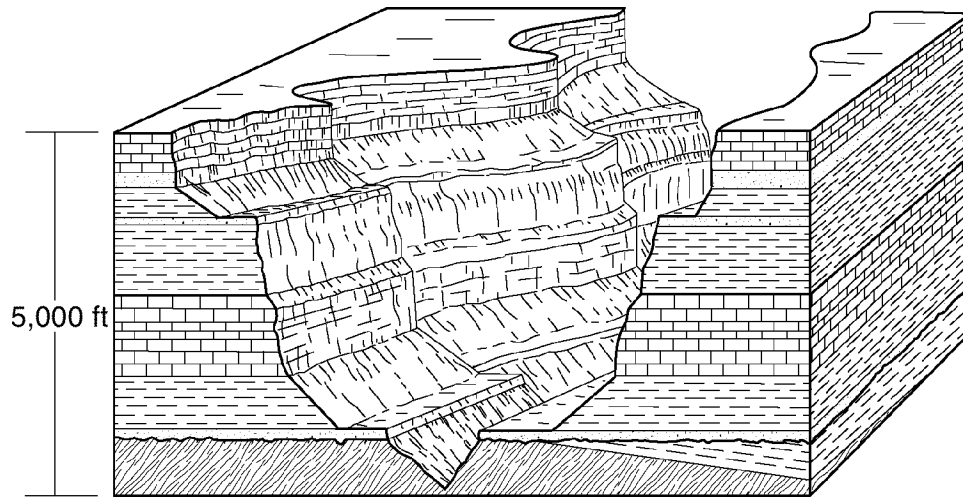
- A) crustal uplift and glacial erosion
 B) crustal folding and glacial erosion
 C) crustal uplift and stream erosion
 D) crustal folding and stream erosion
- 33) The block diagrams below, labeled *A*, *B*, and *C*, show the relative elevation and rock structure of three different landscape regions.



Which of the following sets correctly identifies the landscape region shown in each block diagram?

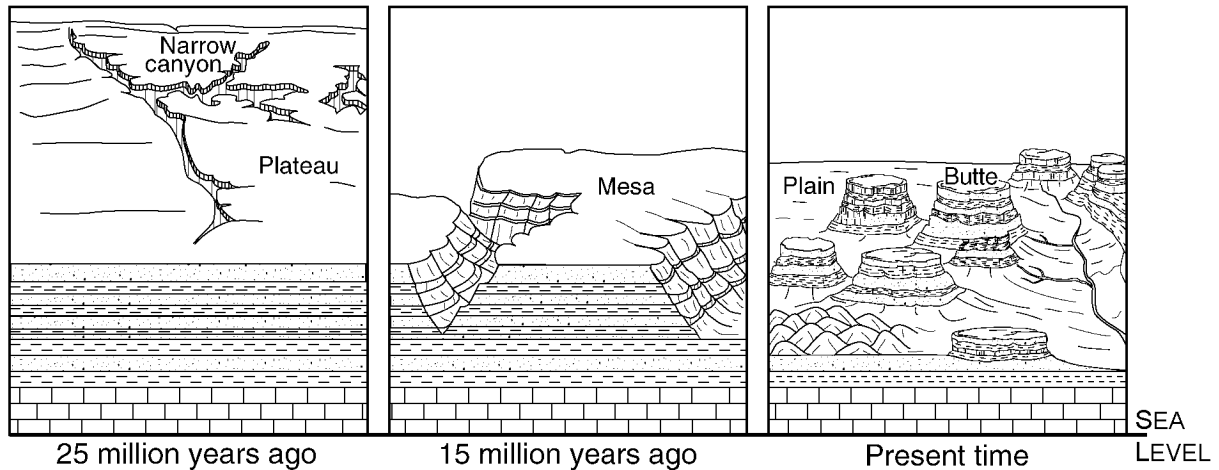
- A) *A*—plateau, *B*—mountain, *C*—plain
 B) *A*—plateau, *B*—plain, *C*—mountain
 C) *A*—mountain, *B*—plain, *C*—plateau
 D) *A*—mountain, *B*—plateau, *C*—plain

- 34) The block diagram below represents a portion of the Grand Canyon.



This region is *best* classified as a

- A) lowland B) plateau C) mountain D) plain
- 35) The sequence of bedrock cross sections below represents the same landscape region over a period of geologic time.



This sequence *best* represents

- A) a humid region that experienced mostly erosional forces
 B) a humid region that experienced mostly uplifting forces
 C) an arid region that experienced mostly uplifting forces
 D) an arid region that experienced mostly erosional forces