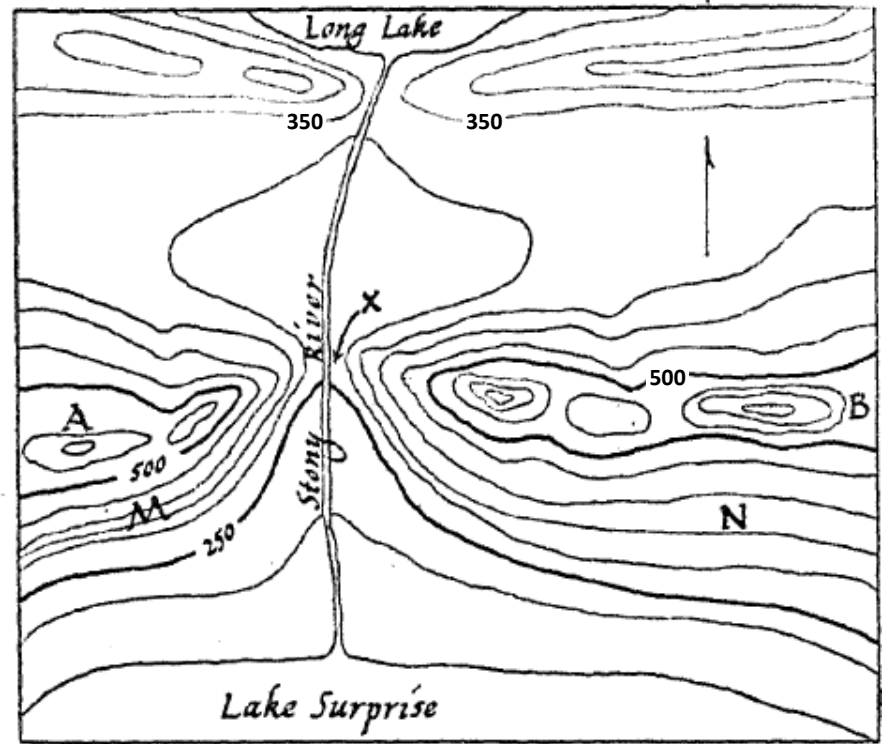


- a What is the contour interval used on this map? Explain what *contour interval* means. [2]
- b What is the highest possible elevation of hill A? Is the top of hill B visible from the top of hill A? [2]
- c In which direction is the Stony River flowing? Explain how you can determine the direction of river flow on a contour map. [2]
- d Is the slope steeper at M or at N? How do you determine steepness of slope on a contour map? [2]



a	b	c	d
---	---	---	---